

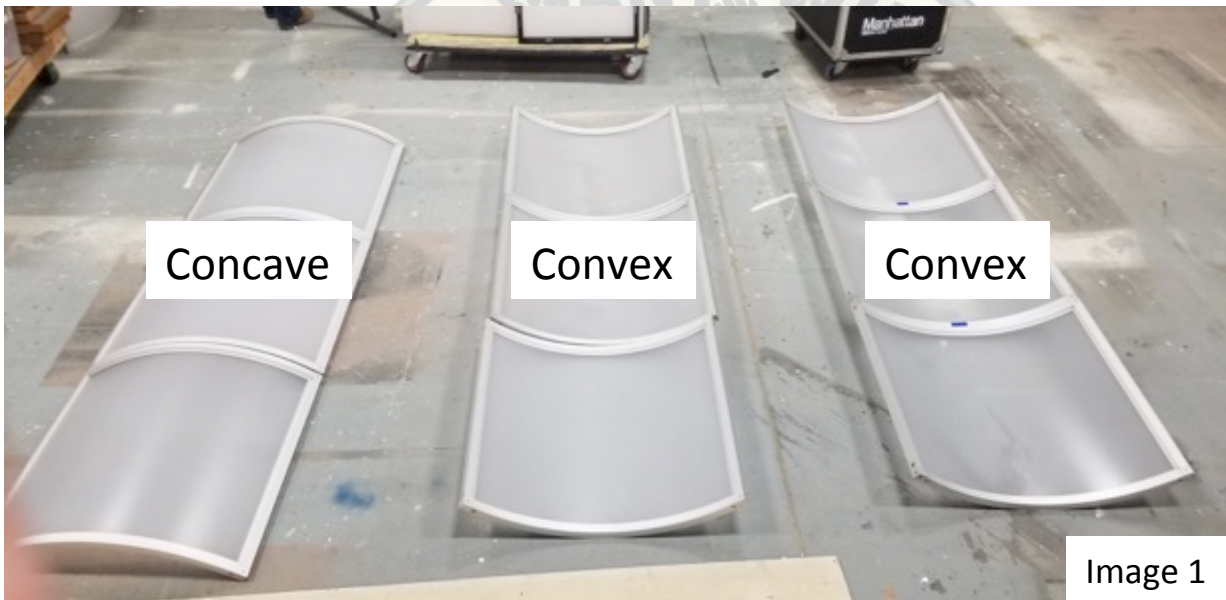


# Cy Tower

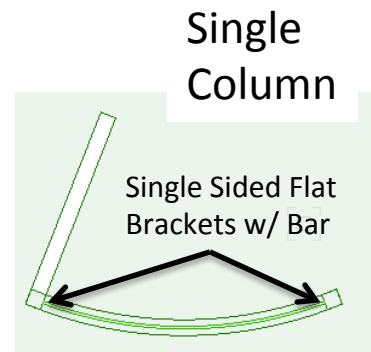
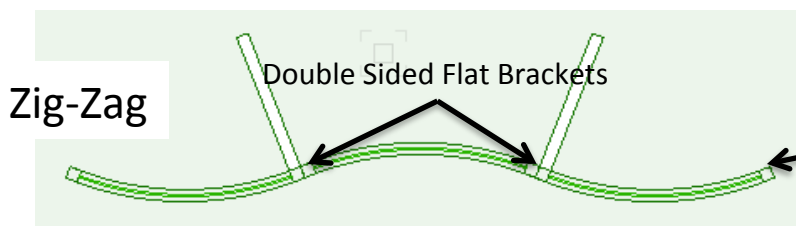
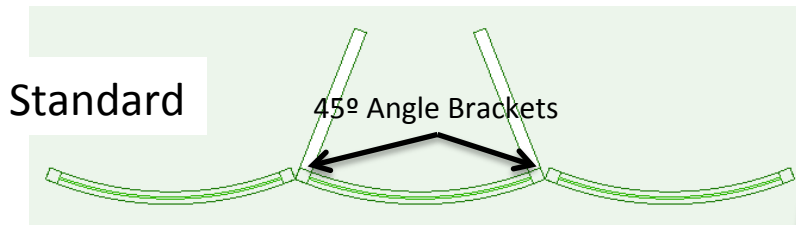
## Standard Setup Instructions

### Step 1:

Layout the necessary Panels Face Down on the Floor in the Correct Concave/Convex Positions (Image 1)



\*Please look at the provided Scenic Summary for Layout of Panels  
These are the Three Most Common Layouts



\*Single Sided Flat Brackets Used at the Ends of any Wall Build

## Step 2:

Attach Steel Brackets to Each Vertical Seam Using Screws (Image 2)

There are 6 types of Steel Brackets

Double Sided Flat Brackets Standard (Image 3)

Double Sided Flat Brackets Top/Bottom (Image 4)

Single Sided Flat Bracket (Image 5)

Single Sided Flat Bracket w/ Bar (Image 6)

45° Angle Brackets Standard (Image 7)

45° Angle Brackets Top/Bottom (Image 8)



Image 2



Image 3



Image 4



Image 5



Image 6



Image 7



Image 8

\*Keep in Mind the Final Layout of the Panels Determines which of the 6 brackets are needed to be used

### Step 3:

Depending on the Layout of Panels you can Combine a Maximum of Two Columns on the Floor Before Lifting into Place (Image 9 Through 11)



Image 9

\*Use the Single Sided Flat Brackets to Safely Stand up Columns before Removing and Attaching to A Double Sided Bracket

\*Always Keep at Least One Side of a Column Attached into Brackets While Attaching the Other side into the Completed Wall



Image 10

\*Never Lift more than 10 total Panels at a Time due to Weight

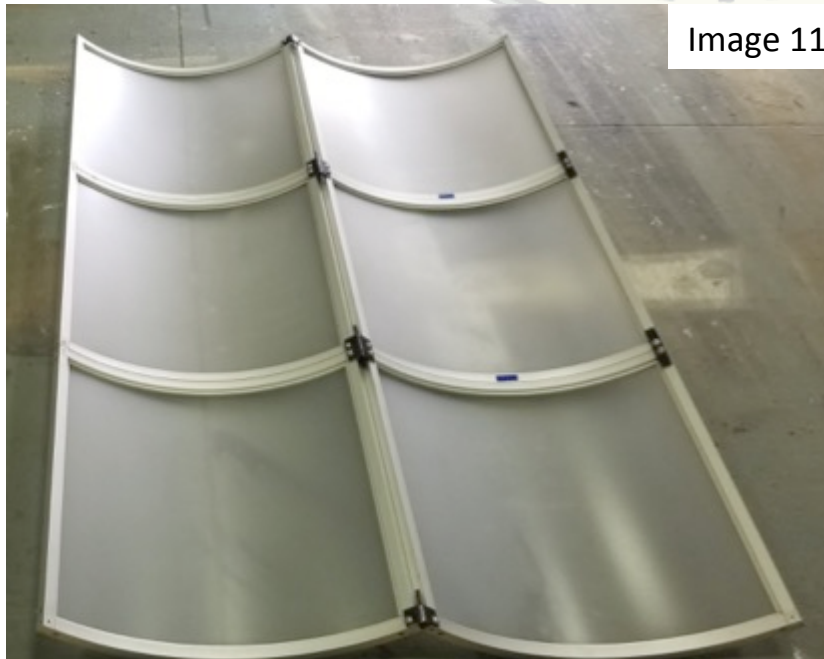


Image 11

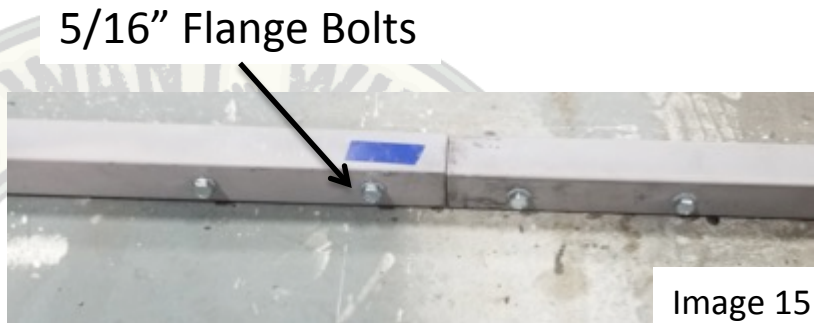
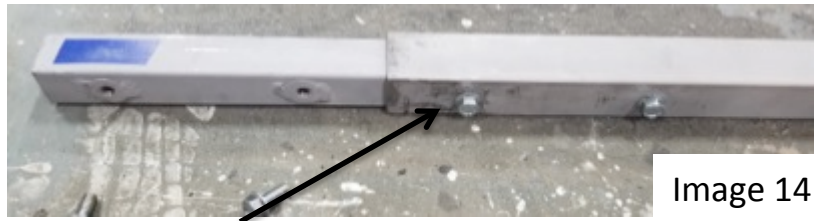
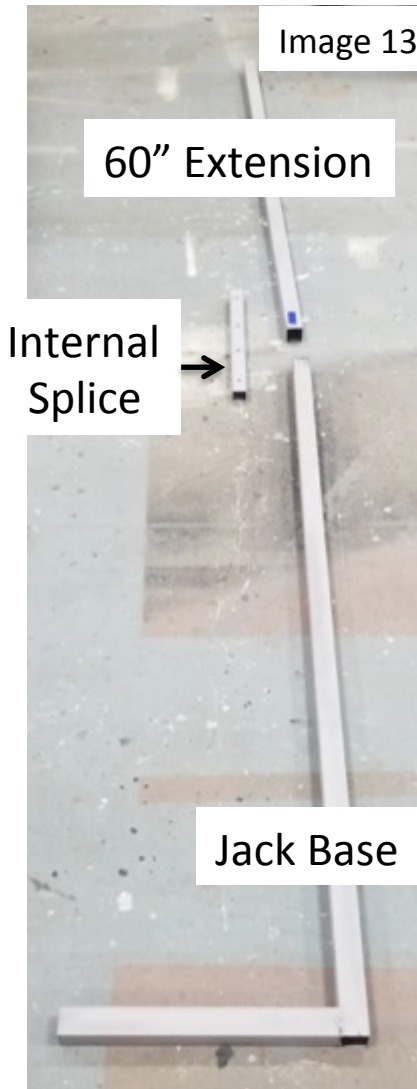


Image 12

\*Add Gaff Tape to Horizontal Seams to Prevent any Light Leak (Image 12)

**Step 4:**

Assemble the The Jacks into Desired Heights Using Internal Splices, Jack Bases, Extensions and 5/16" Flange Bolts (Images 13 through 15)



**Step 5:**

Attach Jacks to Panels while on the Ground Using Velcro Straps (Images 16 & 17)



\*Jacks Work Best When Attached to The Convex Panels

## Step 6:

Stand the Columns Upright and Move into Place

Add Sandbag Weight to Jacks For Safety (Images 18)



Remove Bracket After Standing  
Then Attach Into Rest of Wall



## Step 7:

If Assembling a Larger Wall Follow the Same Instructions and Move each Column into Place and Attach together Using The Brackets

Single Sided Standard Brackets Used on the Edge of Each Wall

(Images 19)

\*Use the Single Sided Flat Brackets to Safely Stand up Columns before Removing and Attaching to A Double Sided Bracket

\*Always Keep at Least One Side of a Column Attached into Brackets While Attaching the Other side into the Completed Wall

**Step 8:**

**After The Units are Assembled Make Sure All Jacks have Sandbags  
Check the Layout of all Panels with the Scenic Summary  
Dust the Front Faces of all Panels & Check with Client (Images 20)**



**\*Follow the installation steps backwards in order to strike safely and avoid any damage to any of the supplied hardware**

**\*If there are any issues or Questions with your Install please call our Office Line 303-744-6465**