



## The Peaks

### Setup Instructions

#### Parts Needed:



**Top Corner\***

(1 needed per unit)

\*No open ended tube



**Bottom Stage Left**

**Corner**

(1 needed per unit)



**Bottom Stage Right**

**Corner**

(1 needed per unit)



**Spud**

(Various needed per unit)



**Straight pieces**

(3 or 6 needed per unit. Depends on final size)



**Foot**

(2 needed per unit)



**Unistrut base**

(2 needed per unit)

#### Included Hardware:

- Phillips Head Screws
- 3/8" Bolts with Unistrut nuts

## Step 1:

Determine the size of unit that is required, collect necessary pieces. If drawing is supplied, refer to it for sizing as well as layout.

\*Note – If a Peak is referred to as 8' that is the length of one side of the triangle, not it's finished standing height.



## Example: Exploded Diagram of 12' Peak

Each corner is 1' long, so to make a 12' Peak each side will need 10' of straight pieces. In this example, that is achieved with a 6' and 4' straight piece per side.

**The Maximum size of a Peaks Unit is 16'.  
Nothing larger is to be assembled.**

## Step 2:

Begin from the Top Corner and build down. Insert spuds into corner piece and attach with phillips screws. (Image 2)

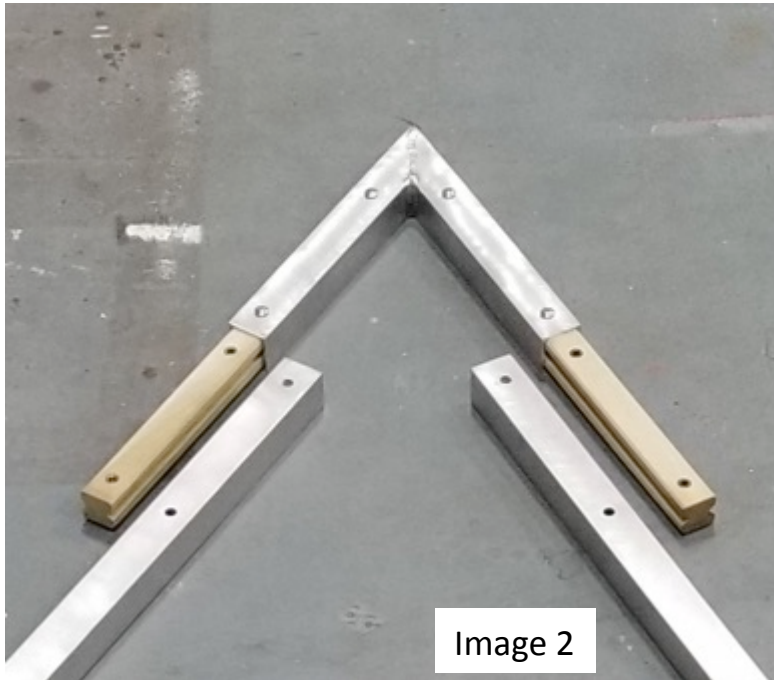


Image 2

## Step 3:

Attach desired straight pieces to Spud. (Images 3 & 4)

\*Note - If Peak is over 10' tall you will need to use more than one straight piece per side. A Spud will be needed at each joint.



Image 3

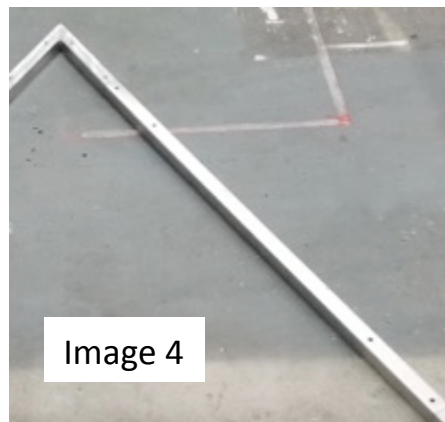
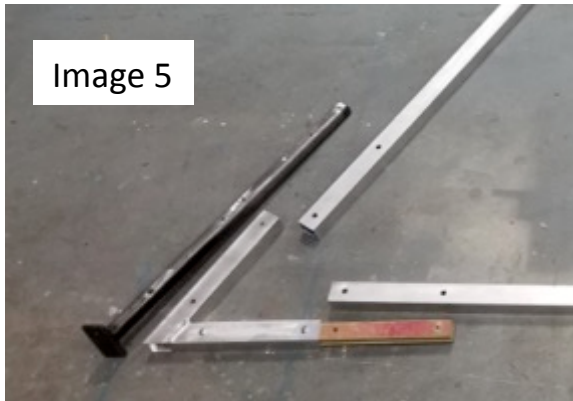


Image 4

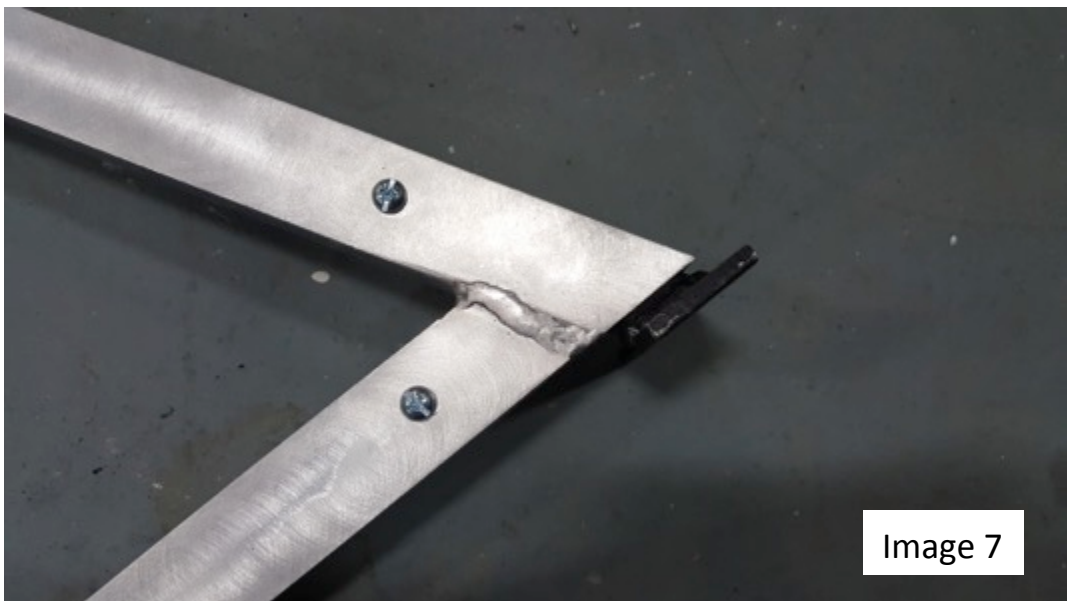
#### Step 4:

Assemble the bottom of the unit with the same method. Be sure to only use Spuds on connections where there is no open end of the tube. (Images 5 & 6)



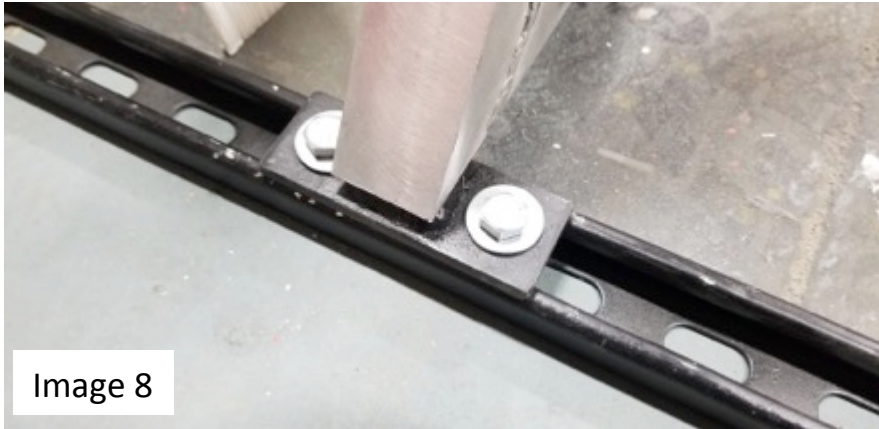
#### Step 5:

Line bottom section up with the sides and insert foot pieces thru the open end of corner tube to attach bottom corners. (Image 7)

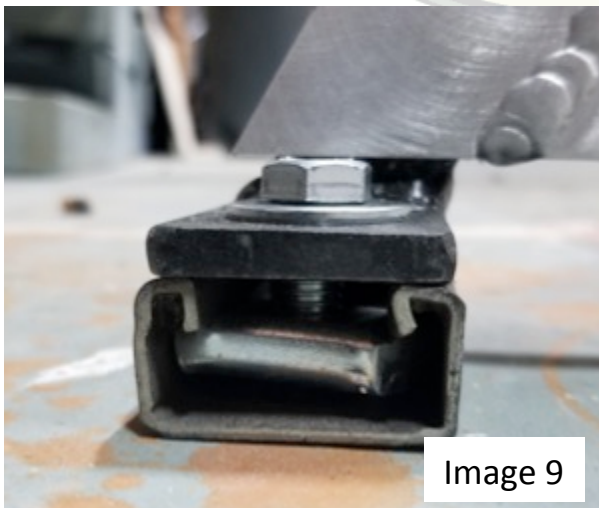


Step 6:

Use Strut notes and bolts to connect Foot into Unistrut bases.  
(Image 8)



Be sure that Strut nuts are running perpendicular to the Unistrut base for proper connection. (Image 9) When tightening strut nuts make sure to leave at least 12" of base extended past the foot connection for stability. (Image 10)



Step 7:

Repeat this process for all necessary units, then arrange in desired layout. Be sure to have all screws facing Up Stage. Finished product should look like Image 11.



**\*Follow the installation steps backwards in order to strike safely and avoid any damage to any of the supplied hardware**

**If there are any issues or Questions with your Install please call our Office Line**

**303-744-6465 ext 101**