



## Space System Truss Standard Setup Instructions

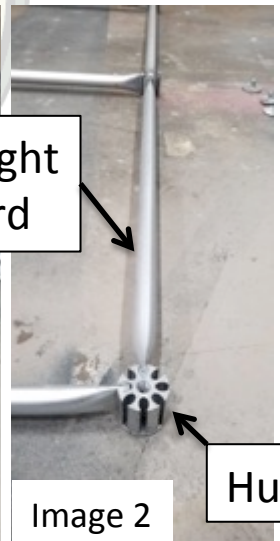
### Step 1:

Layout the necessary Straight Cords and Hubs face down on the floor  
Only Remove the Caps on the back side of the Hubs (Images 1 & 2)

Image 1



Straight  
Cord



Hub

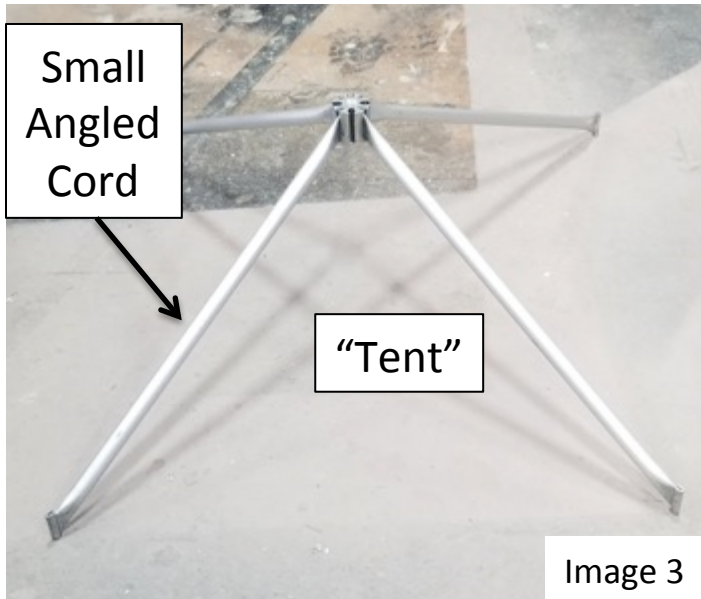
\*All Cords slide through the notch's in the Hubs

\*See Provided YWW Summary Rendering of Show for Layout

## Step 2:

Assemble the “tents” using the Small Angled Cords and Hub

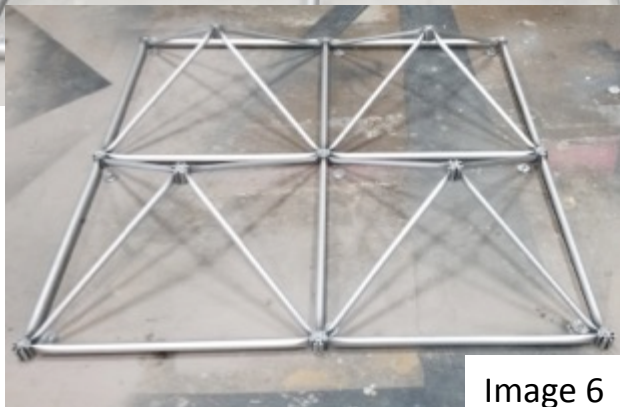
Only Remove the Cap on the back side of the center Hub (Images 3 & 4)



## Step 3:

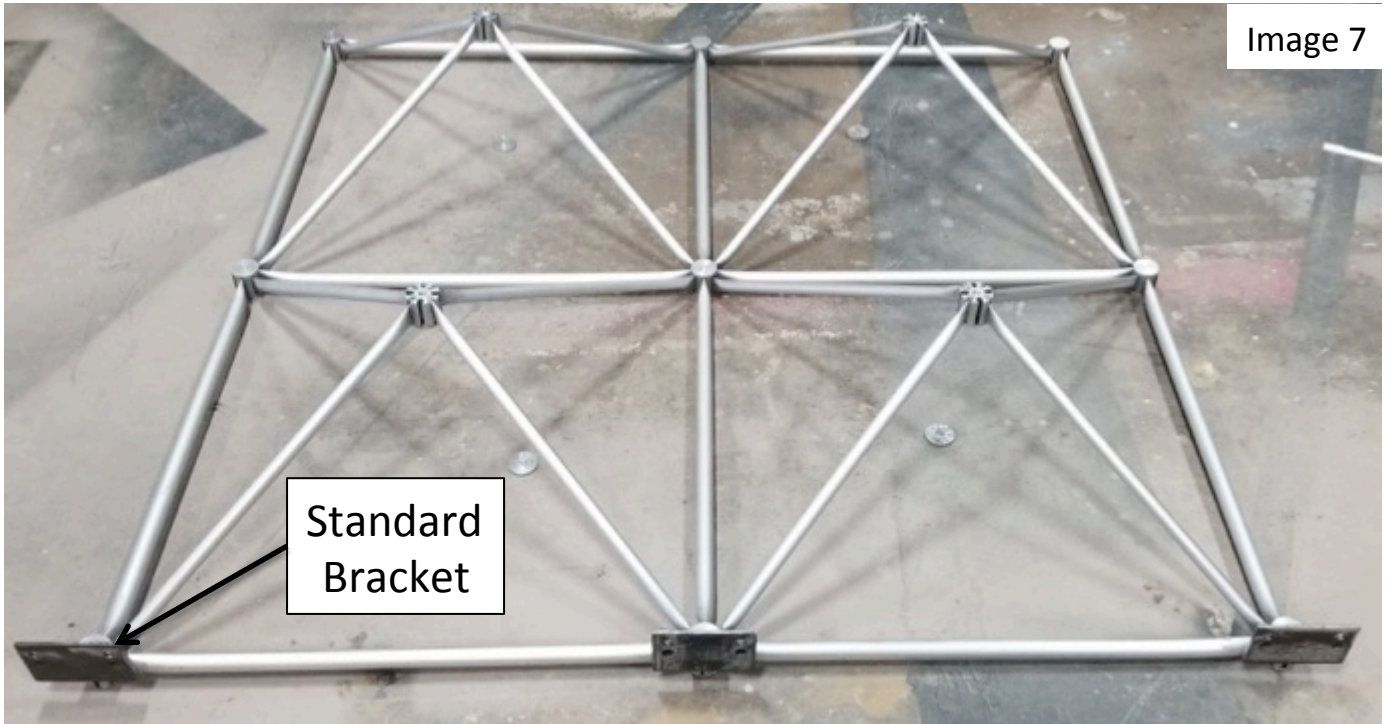
Place “tents” into the slots of the pre built squares from Step 1

(Images 5 & 6)



Step 4:

Attach the Hub Caps for the squares, leaving the caps off the of “tents”  
Add the Standard Bracket to the bottom row of Hubs (Images 7 & 8)



\*Sandwich the Standard Bracket using the Hub Cap



### Step 5:

Attach the stiffener Straight Cords between all “tent” Hubs

- Creating another square on top of the “tents”

Add the Standard Leg Cord to the bottom of the structure

Attach all of the remaining Hub Caps for the “tents” (Images 9 & 10)

Image 9

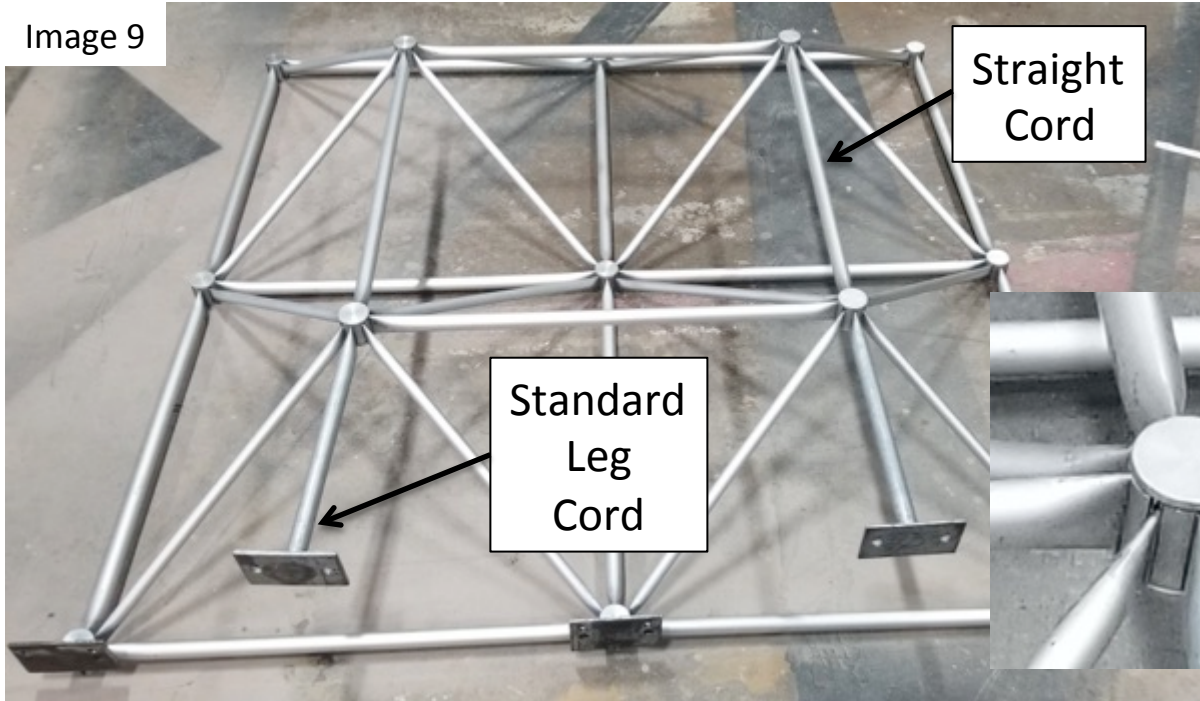


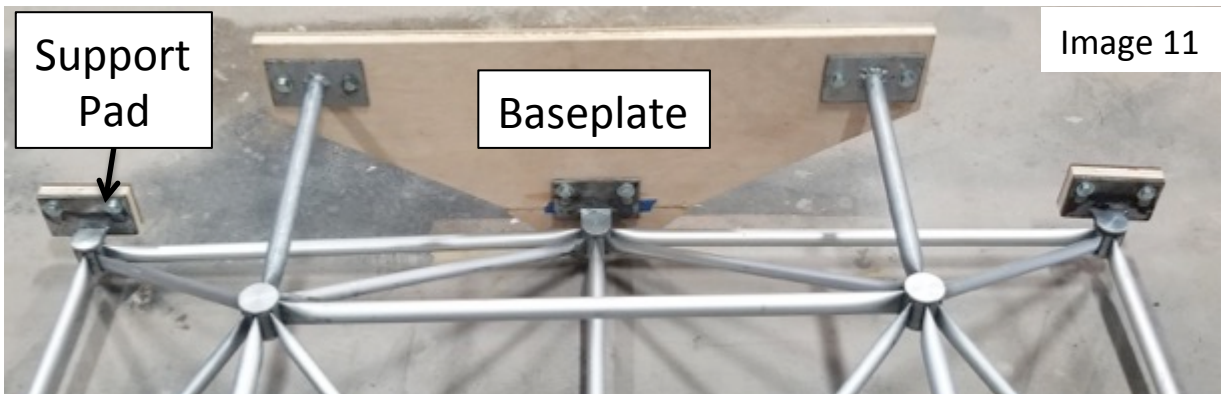
Image 10



### Step 6:

Attach Baseplates and Support Pads to the Standard Brackets & Legs

Use the provided 3/8” Hardware & Tools for Attachment (Image 11)



**If Specialty Facings are required STOP here and use the provided special instructions manual before continuing**

**Step 7:**

Stand the assembled units upright and test stability of the unit

If additional support is required attach the supplied Jacks to the back

We recommend using the Jacks when the unit is taller then 8'

We recommend using 25lbs Sand Bag per Jack (Images 12 -14)

Image 12



Image 13



Image 14



\*Sandwich the Jack Bracket using the Hub Cap



## Step 8:

Move the Units into place for the set up in the room (Images 15 & 16)



Image 15

**\*Follow the installation steps backwards in order to strike safely and avoid any damage to any of the supplied hardware**



Image 16

**\*If there are any issues or Questions with your Install please call our Office Line 303-744-6465**